

# Home Stretch

THIS CAREFULLY CRAFTED 900-SQUARE-FOOT ADDITION PERFECTLY SUITS A FAMILY AT WORK OR PLAY.

BY MIKE BUTLER PHOTOS MICHAEL PARTENIO PRODUCED BY KARIN LIDBECK-BRENT



The Deetjens used Vermont artisans to make cabinets and light fixtures for the addition. "It's a way to employ local talent and get exactly what you want," explains Kim, above.

Looking to swap the hubbub of Boston for the quiet country life a few years ago, Kim and Cliff Deetjen couldn't help falling for the charms of a 1940 stone cottage in Vermont. After adding on a mudroom and a dormer that created an extra bathroom, Kim, an interior designer, and Cliff, who runs a design-build firm, set their sights on a family room addition.

Cliff didn't want to detract from the architectural charm of the 1,800-square-foot Cape Cod-style home, so he settled on the straightforward style of a carriage house, borrowing from the cottage's eyebrow window over the front door to create a sweeping arched window. Gentle arcs along the loft wall and a soaring cathedral ceiling also add drama to the new space, which accommodates well-equipped offices for grownups and kids, as well as room to exercise, entertain, and hang out in front of the fireplace or TV.

"It's truly a room for the whole family," Kim says.

Siting the addition, *below*, at an offset angle from the main house created a niche for a small but well-used patio.

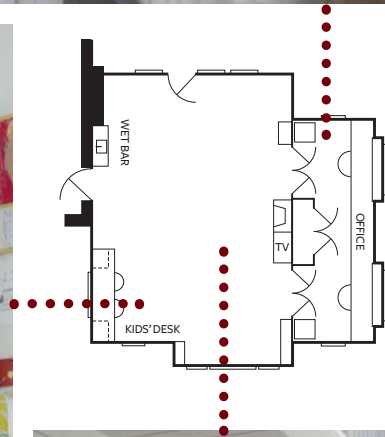




Kim and Cliff's office, *left*, offers plenty of room to store and spread out plans and sample books. Tucked underneath the loft, the office can be closed off with two sets of French doors.

Alex, 8, and Ben, 6, had their say in how they wanted their work/playspace, *below left*, to function. It will grow with them when they graduate to computers.

Kim and Cliff didn't want the room's fireplace and TV to duel for attention, so they grouped them together, *below*. The TV can be closed off with doors that blend into the room's shiplap siding.





When their two boys are old enough, the Deetjens will add a library-style ladder that goes up to the new family room's loft. The railing on the end is hinged to swing inward for access.