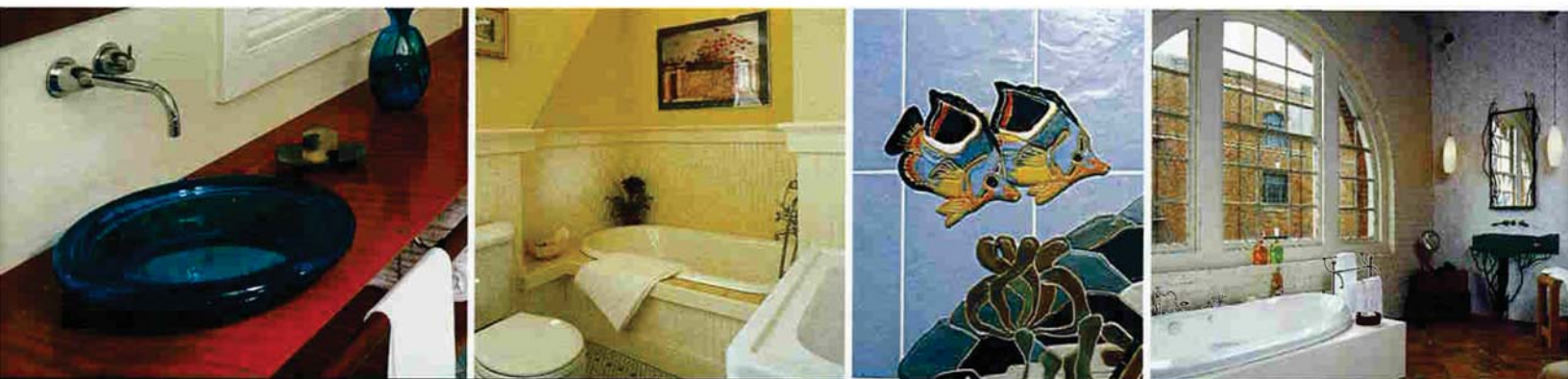


TAUNTON
Home

NEW

BATHROOM

IDEA BOOK



CABINETS • COUNTERTOPS • STORAGE



FLOORING • LIGHTING • FIXTURES



ANDREW WORMER

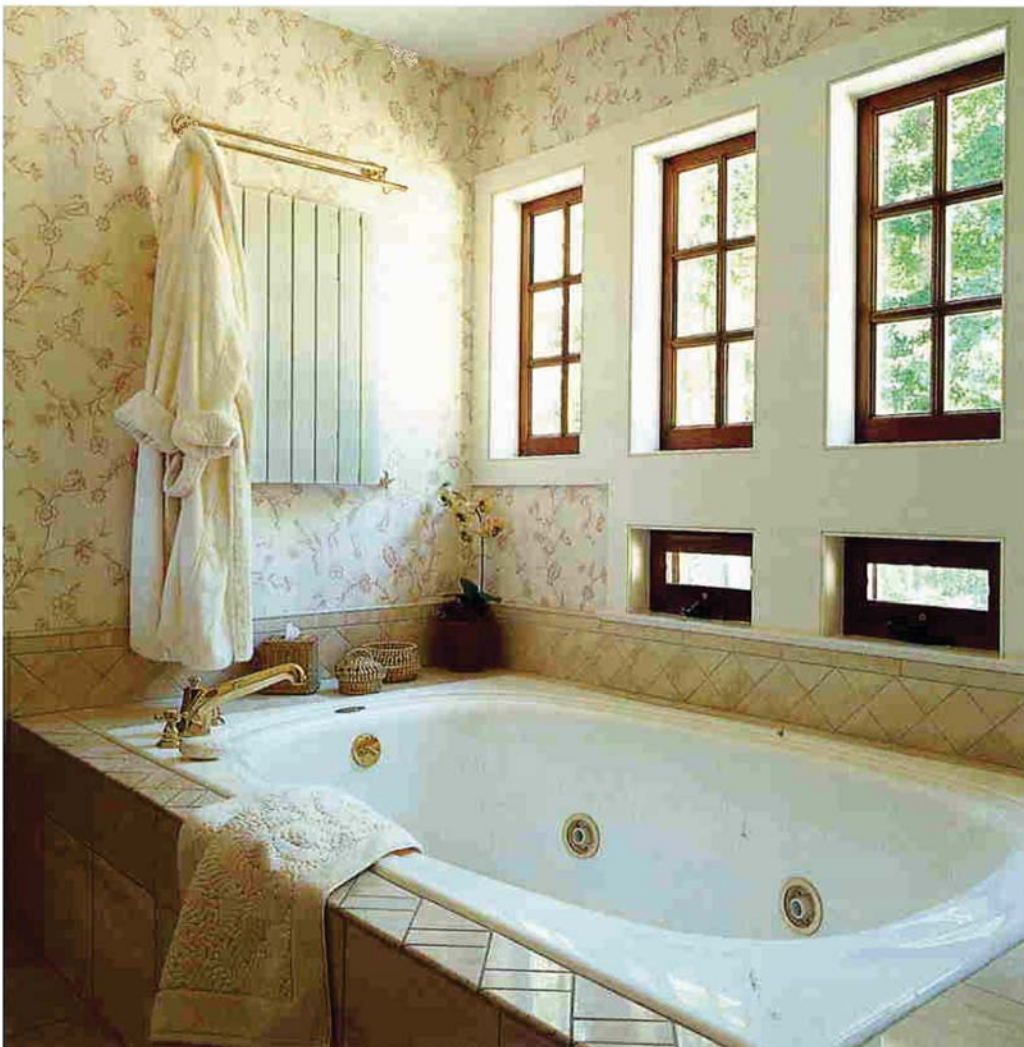
A Look at Lighting

WINDOWS LET IN LIGHT and keep us connected with the outside world. Choose a specific window type—casement or double-hung, for example—for the way it matches your home's architecture. But orient your windows so that they take best advantage of the available view without compromising privacy within.

When the sun goes down and you turn on the lights, you should like what you see. Choose lighting fixtures that provide both general illumination and good task lighting for activities such as applying cosmetics or shaving. Accent and decorative lighting can be used to add an element of drama, while suitable controls, such as timers and dimmers, can be used to create just the right mood.



▲ FOR BATHROOMS THAT ARE TUCKED INTO odd spaces, a skylight can be an excellent source of natural light that also provides ventilation if it's operable.



◀ WITH THREE FIXED-SASH windows located high on the wall for both natural light and privacy and two smaller operable awning windows below for ventilation, this tub alcove is bright but not exposed. A panel radiator mounted on the far wall warms the space with gentle even heat and helps dry out towels.