

TAUNTON
Home

DECK & PATIO

I D E A B O O K



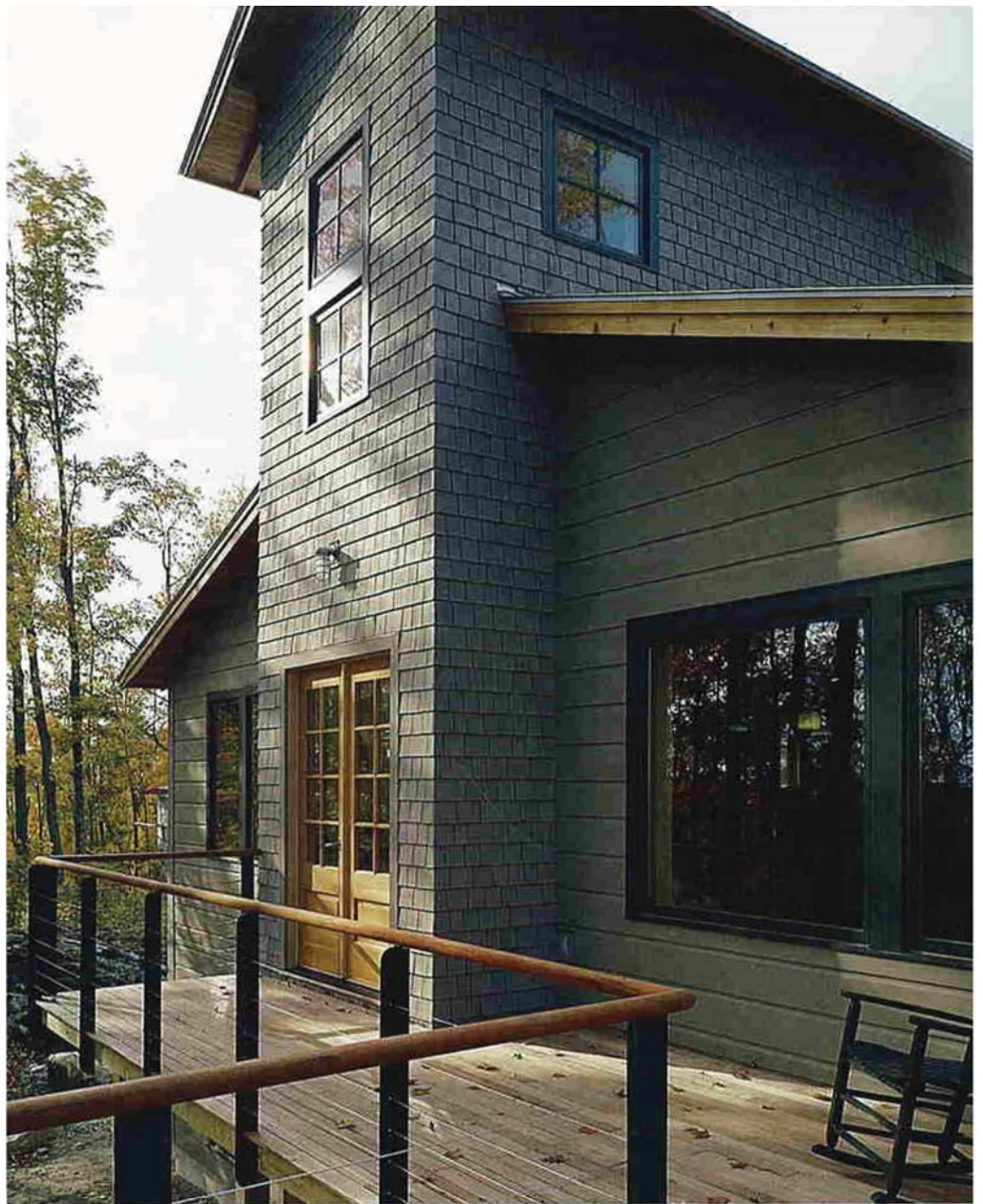
O U T D O O R R O O M S • S H A D E A N D S H E L T E R



W A L K W A Y S A N D P A T H S • L A N D S C A P E S T R U C T U R E S

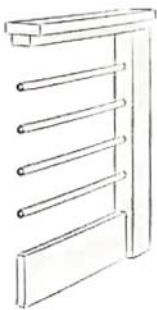


A TRANSPARENT BALUSTRADE is created by aircraft cable stretched horizontally between steel up-rights, with a wooden top rail on this raised deck. These cables are readily available at specialty hardware and stair and railing fabricators. The metal posts extend below the deck at the edge and are lag-bolted into the rim joist for stability and secure attachment.



ALTERNATIVES TO WOOD RAILINGS

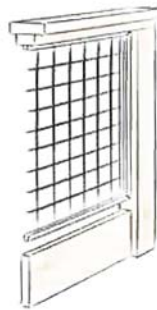
There are many alternatives to wood railings, notably balustrades made up of pipe railing, wrought iron, aircraft cable, wire mesh, or glass or acrylic panels.



Painted steel or copper tubing



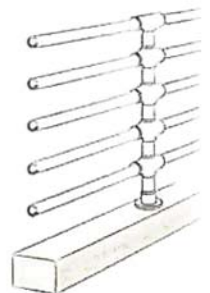
Galvanized steel cable



Painted steel mesh



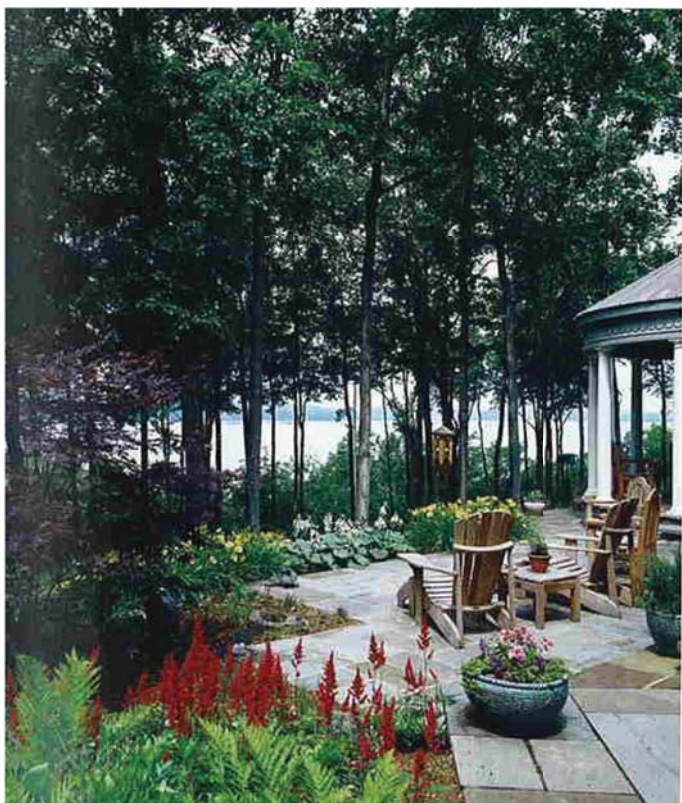
Acrylic or glass panels



Welded steel tubing

building big versus building better. You may have to grapple with decisions such as whether to build a large, rectangular deck with less expensive materials, or a smaller deck with levels or interesting architectural features built of a higher-grade wood. Or you may have to decide between an understated patio built of found fieldstones set in a sand base versus an elegant bluestone terrace set on a concrete slab with a surrounding stone wall.

For a deck, your budget might be almost equally split between labor and materials; for patios, much of the cost is for the labor, though concrete and natural stone are cheap compared with cut bluestone or fancier granite paving materials. Both decks and patios can be easily tackled by an experienced do-it-yourselfer, so you'll save a lot if you can provide your own labor.



◀ THE INNOVATIVE ZIGZAG EDGE of this alluring patio allows the plants to encroach and knits the patio into the landscape. The patio follows the slope of the gentle hill through flowers and greenery.

Working with Professionals

IT IS A LITTLE INTIMIDATING to know how to begin to make your ideal patio or deck a reality. Knowing who to hire and what they can do for you is key.

- A surveyor prepares the plot plan or survey, which is like a scale map of your property that locates the legal property lines, your house and other buildings, and any other major features of the site, such as driveways, rock outcroppings, paths, and trees.
- An architect is a licensed professional with years of training who can design a deck or patio and prepare the detailed drawings from which it will be built.
- A landscape architect is a licensed professional with years of training who can design the total landscape. This includes selecting plant materials and preparing detailed drawings from which the deck or patio will be built.
- A builder or contractor is the person who actually constructs the deck or patio for you from a set of drawings that he or she might produce, or from the more detailed drawings that the architect or landscape architect may have prepared.
- A mason is a contractor who is skilled at constructing things from stone and concrete. This is the person who can build a stone wall, patio, or steps from drawings that someone else prepares, or from a drawing that he or she might produce.
- A carpenter is a contractor who is skilled at constructing things from wood. There are contractors who specialize in building decks and who can also supply you with design services.